



MODEL M1055 BENCHTOP SANDBLASTER



OWNER'S MANUAL

Phone: (360) 734-3482 • Online Technical Support: tech-support@shopfox.biz

COPYRIGHT © MARCH, 2006 BY WOODSTOCK INTERNATIONAL, INC.

**WARNING: NO PORTION OF THIS MANUAL MAY BE REPRODUCED IN ANY SHAPE OR FORM WITHOUT
THE WRITTEN APPROVAL OF WOODSTOCK INTERNATIONAL, INC.**



WARNING!

This manual provides critical safety instructions on the proper setup, operation, maintenance and service of this machine/equipment.

Failure to read, understand and follow the instructions given in this manual may result in serious personal injury, including amputation, electrocution or death.

The owner of this machine/equipment is solely responsible for its safe use. This responsibility includes but is not limited to proper installation in a safe environment, personnel training and usage authorization, proper inspection and maintenance, manual availability and comprehension, application of safety devices, blade/cutter integrity, and the usage of personal protective equipment.

The manufacturer will not be held liable for injury or property damage from negligence, improper training, machine modifications or misuse.



WARNING!

Some dust created by power sanding, sawing, grinding, drilling, and other construction activities contains chemicals known to the State of California to cause cancer, birth defects or other reproductive harm. Some examples of these chemicals are:

- Lead from lead-based paints.
- Crystalline silica from bricks, cement and other masonry products.
- Arsenic and chromium from chemically-treated lumber.

Your risk from these exposures varies, depending on how often you do this type of work. To reduce your exposure to these chemicals: Work in a well ventilated area, and work with approved safety equipment, such as those dust masks that are specially designed to filter out microscopic particles.

INTRODUCTION

Woodstock Technical Support

We stand behind our machines! In the event that questions arise about your machine, parts are missing, or a defect is found, please contact Woodstock International Technical Support at (360) 734-3482 or send e-mail to: tech-support@shopfox.biz. Our knowledgeable staff will help you troubleshoot problems and send out parts for warranty claims.

If you need the latest edition of this manual, you can download it from <http://www.shopfox.biz>. If you have comments about this manual, please contact us at:

Woodstock International, Inc.
Attn: Technical Documentation Manager
P.O. Box 2309
Bellingham, WA 98227

About Your New Benchtop Sandblaster

Your new **SHOP FOX®** Benchtop Sandblaster has been specially designed to provide many years of trouble-free service. Close attention to detail, ruggedly built parts and a rigid quality control program assure safe and reliable operation.

The Model M1055 Sandblaster is equipped with an industrial-duty blast gun with ceramic tip, a siphon hose, a built-in light, large viewing window, and sealed rubber gloves. The hopper recycles and stores the sandblasting media for reuse or easy removal. Safely blast away paint and rust without making a mess around your shop.

Woodstock International, Inc. is committed to customer satisfaction in providing this manual. It is our intent to include all the information necessary for safety, ease of assembly, practical use and durability of this product.

Specifications

Design Type	Benchtop Side-Loading Model
Width	24.5"
Height.....	21"
Depth	19.5"
Operating Air Pressure Range	60-100 PSI
Recommended Air Supply.....	5-14 CFM
Abrasive Capacity	10 lbs.
Abrasive Type.....	Dry Only
Lighting Type	15 Watt Fluorescent
Load & Unload Access	Sides
Power Supply	110 VAC w/12 VDC Transformer
Approximate Machine Weight	50 lbs.

SAFETY

**READ MANUAL BEFORE OPERATING MACHINE.
FAILURE TO FOLLOW INSTRUCTIONS BELOW WILL
RESULT IN PERSONAL INJURY.**

DANGER

Indicates an imminently hazardous situation which, if not avoided, **WILL** result in death or serious injury.

WARNING

Indicates a potentially hazardous situation which, if not avoided, **COULD** result in death or serious injury.

CAUTION

Indicates a potentially hazardous situation which, if not avoided, **MAY** result in minor or moderate injury.

NOTICE



This symbol is used to alert the user to useful information about proper operation of the equipment, and/or a situation that may cause damage to the machinery.

Standard Safety Instructions

1. **READ THROUGH THE ENTIRE MANUAL BEFORE STARTING MACHINERY.** Machinery presents serious injury hazards to untrained users.
2. **ALWAYS USE ANSI APPROVED SAFETY GOGGLES WHEN OPERATING MACHINERY.** Everyday eye-glasses only have impact resistant lenses—they are NOT safety goggles.
3. **ALWAYS WEAR AN NIOSH APPROVED RESPIRATOR WHEN OPERATING MACHINERY THAT PRODUCES DUST.** Many dusts are carcinogenic, and can cause cancer and severe respiratory illnesses.
4. **ALWAYS USE HEARING PROTECTION WHEN OPERATING MACHINERY.** Machinery noise can cause permanent hearing damage.
5. **WEAR PROPER APPAREL.** DO NOT wear loose clothing, gloves, neckties, rings, or jewelry which may get caught in moving parts. Wear protective hair covering to contain long hair and wear non-slip footwear.
6. **NEVER OPERATE MACHINERY WHEN TIRED, OR UNDER THE INFLUENCE OF DRUGS OR ALCOHOL.** Be mentally alert at all times when running machinery.
7. **ONLY ALLOW TRAINED AND PROPERLY SUPERVISED PERSONNEL TO OPERATE MACHINERY.** Make sure operation instructions are safe and clearly understood.
8. **KEEP CHILDREN AND VISITORS AWAY.** Keep all children and visitors a safe distance from the work area.
9. **MAKE WORKSHOP CHILD PROOF.** Use padlocks, master switches, and remove start switch keys.

10. **NEVER LEAVE WHEN MACHINE IS RUNNING.** Turn power **OFF** and allow all moving parts to come to a complete stop before leaving machine unattended.
11. **DO NOT USE IN DANGEROUS ENVIRONMENTS.** DO NOT use machinery in damp, wet locations, or where any flammable or noxious fumes may exist.
12. **KEEP WORK AREA CLEAN AND WELL LIT.** Clutter and dark shadows may cause accidents.
13. **USE A GROUNDED EXTENSION CORD RATED FOR THE MACHINE AMPERAGE.** Undersized cords over-heat and lose power. Replace extension cords if they become damaged. DO NOT use extension cords for 220V machinery.
14. **ALWAYS DISCONNECT FROM POWER SOURCE BEFORE SERVICING MACHINERY.** Make sure switch is in OFF position before reconnecting.
15. **MAINTAIN MACHINERY WITH CARE.** Keep blades sharp and clean for best and safest performance. Follow instructions for lubricating and changing accessories.
16. **MAKE SURE GUARDS ARE IN PLACE AND WORK CORRECTLY BEFORE USING MACHINERY.**
17. **REMOVE ADJUSTING KEYS AND WRENCHES.** Make a habit of checking for keys and adjusting wrenches before turning machinery **ON**.
18. **CHECK FOR DAMAGED PARTS BEFORE USING MACHINERY.** Check for binding and alignment of parts, broken parts, part mounting, loose bolts, and any other conditions that may affect machine operation. Repair or replace damaged parts.
19. **USE RECOMMENDED ACCESSORIES.** Refer to the instruction manual for recommended accessories. The use of improper accessories may cause risk of injury.
20. **DO NOT FORCE MACHINERY.** Work at the speed for which the machine or accessory was designed.
21. **SECURE WORKPIECE.** Use clamps or a vise to hold the workpiece when practical. A secured workpiece protects your hands and frees both hands to operate the machine.
22. **DO NOT OVERREACH.** Keep proper footing and balance at all times.
23. **MANY MACHINES WILL EJECT THE WORKPIECE TOWARD THE OPERATOR.** Know and avoid conditions that cause the workpiece to "kickback."
24. **ALWAYS LOCK MOBILE BASES (IF USED) BEFORE OPERATING MACHINERY.**
25. **BE AWARE THAT CERTAIN DUST MAY CAUSE AN ALLERGIC REACTION** in people and animals, especially when exposed to fine dust. Make sure you know what type of dust you will be exposed to and always wear an approved respirator.

Additional Safety Instructions for Sandblasters

	<div data-bbox="737 268 1094 331"> WARNING</div> <p data-bbox="396 346 1479 625">READ and understand this Owner's Manual before using your sandblaster! Sandblasting presents a real hazard of silicosis and other respiratory contamination injuries! These injuries are permanent and can get worse over time. If you use sandblasting equipment without the proper protection, your lungs and eyes may become irreversibly contaminated. DO NOT use this sandblaster unless you know how to use it and protect yourself correctly. For types of protective equipment and acceptable respirator types, contact your local OSHA or NIOSH office.</p>
---	--

1. **PROTECTING RESPIRATORY SYSTEM.** Make sure that you always wear an approved NIOSH respirator when using or cleaning the sandblaster.
2. **LEAVING THE AREA.** Always disconnect air supply when leaving the sandblaster to prevent an accidental blast gun discharge.
3. **PROTECTING EYES.** Make sure that you always use safety goggles when using or cleaning the sandblaster.
4. **PROTECTING ENVIRONMENT.** Always close and latch shut the sandblaster doors when not in use to protect the environment from any abrasive leakage.
5. **PREVENTING ABRASIVE LEAKS.** Replace nozzles, hoses, lenses, and gloves when they become worn. Check cabinet for any leaks before every use, and reseal immediately.
6. **SAFE SANDBLASTING.** Do not use the sandblaster over the rated PSI, or cabinet explosion could occur.
7. **CORRECT LIGHTING.** Do not use a light that uses over 60 watts.
8. **LOADING & UNLOADING.** Disconnect the air supply before loading or unloading the workpiece from the sandblaster cabinet so prevent an accidental blast gun discharge.
9. **SAFE MAINTENANCE.** Disconnect air supply and electrical before doing any maintenance.
10. **SAFE SANDBLASTING.** Always secure the door(s) before beginning sandblasting operations. Never operate the sandblaster with the doors open to accommodate a workpiece that is longer than the cabinet can hold.
11. **AVOIDING EXPLOSION HAZARDS.** Never sandblast in an environment where flammable gasses or liquids are present or are near. Electrostatic discharges by sandblasting operations can ignite volatile gasses or liquids nearby.

ELECTRICAL

110V Operation

The SHOP FOX[®] Model M1055 is wired for 110 Volt operation. Never replace a circuit breaker with one of higher amperage without consulting a qualified electrician to ensure compliance with wiring codes.

If you are unsure about the wiring codes in your area or you plan to connect your machine to a shared circuit, you may create a fire hazard—consult a qualified electrician to reduce this risk.

Extension Cords

When it is necessary to use an extension cord, use the following guidelines:

- Use cords rated for Standard Service
- Never exceed a length of 100 feet
- Use cords with 14 ga. wire
- Do not use cords in need of repair
- Make sure the extension cord female plug and the sandblaster transformer is located in a dry place away from all combustibles

WARNING

If using an extension cord, make sure the extension cord female plug and the sandblaster transformer is located in a dry place away from all combustibles. Otherwise serious injury may occur.

SET UP

Unpacking

The **SHOP FOX®** Model M1055 has been carefully packaged for safe transporting. If you notice the machine has been damaged, please contact your authorized **SHOP FOX®** dealer immediately.

If any parts are missing, examine the packaging for the missing parts. For any missing parts, find the part number in the back of this manual and contact Woodstock International, Inc. at (360) 734-3482 or at tech-support@shopfox.biz

To assemble the sandblaster, do these steps:

1. Install the filter assembly with the screws and nuts (**Figure 1**).
2. Install the gloves with the two large hose clamps.
3. Install the two lamp holders with the two screws, and then install the electrical box and wires as shown in **Figure 2**.
4. Install the bulkhead fitting with the seal (**Figure 3**).
5. Attach the air supply hose and suction hose to the bulkhead fittings and suction pipe with the hose clamps (**Figure 3**).
6. Make sure all hose clamps, hoses, bolts, and screws are tight and do not leak.
7. Plug in the transformer cord into the sandblaster cabinet.

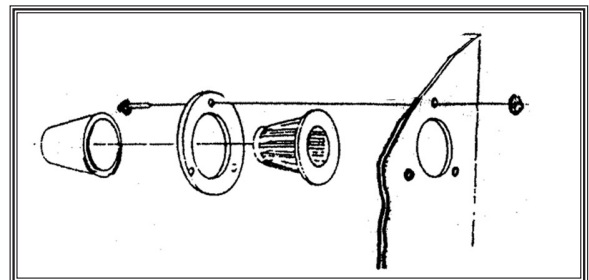
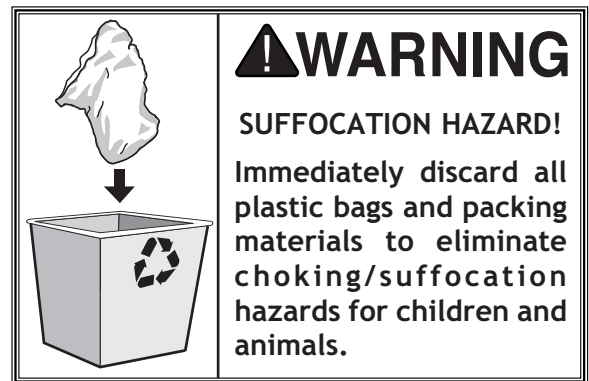


Figure 1. Filter installation.

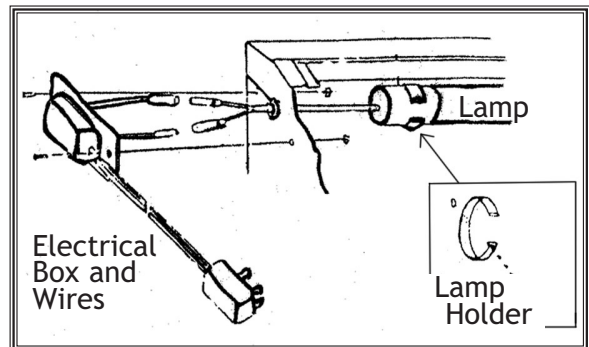


Figure 2. Lamp and electrical installation.

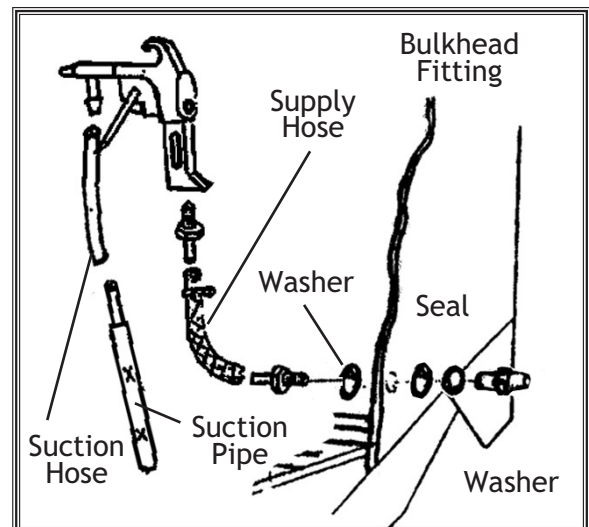


Figure 3. Blast gun assembly.

OPERATIONS

General

The Model M1055 will perform many types of operations that are beyond the scope of this manual. Many of these operations can be dangerous or deadly if performed incorrectly.

The instructions in this section are written with the understanding that the operator has the necessary knowledge and skills to operate this machine. **If at any time you are experiencing difficulties performing any operation, stop using the machine!**

If you are an inexperienced operator, we strongly recommend that you read books, trade articles, or seek training from a person with quality sandblasting experience before performing any unfamiliar operations. **Above all, your safety comes first!**

Sandblasting

The Model M1055 Sandblaster is equipped with an industrial-duty blast gun with ceramic tip, siphon hose, work light, large viewing window, and sealed rubber gloves. The hopper recycles and stores the sandblasting media for reuse or easy removal.

To use the sandblaster, do these steps:

1. **Wear safety goggles and a NIOSH approved respirator at all times when operating or maintaining your sandblaster!**
2. Plug in the transformer and turn the light **ON**.
3. Install the correct nozzle and air jet into the gun for the abrasive type you will use. Refer to **Page 9** for options.
4. Carefully, without causing a hazardous dust cloud, pour or spade-in ten pounds of abrasive into the sandblaster. **DO NOT** over-fill or sandblasting may be sluggish and cloudy inside of the cabinet.
5. Insert the workpiece, and close and lock the loading window.

WARNING

Sandblasting presents a real hazard of silicosis and other lung contamination injuries! These injuries are permanent and can get worse over time. If you use sandblasting equipment without the proper protection, your lungs and eyes may become irreversibly contaminated. **DO NOT** use this sandblaster unless you know how to use it and protect yourself correctly. For types of protective equipment and acceptable respirator types, contact your local OSHA or NIOSH office.

WARNING



READ and understand this entire instruction manual before using this sandblaster. Serious personal injury may occur if safety and operational information is not understood and followed. **DO NOT** risk your safety by not reading!

CAUTION



MAKE your shop "child safe." Ensure that your workplace is inaccessible to youngsters by closing and locking all entrances when you are away. **NEVER** allow untrained visitors in your shop when assembling, adjusting or operating equipment.

6. Adjust the air supply regulator to an air pressure between 60-100 PSI, and begin sandblasting in a slow circular motion.

Note: A good starting point for tip distance is two inches away from the workpiece. Start out with a low air pressure setting to avoid excess peening and abrasive wear.

Note: Experiment with different pressures, abrasives, tips and jets to gain practical experience (**Figure 4**).

Note: Keep the sandblasting abrasives moisture-free; otherwise, the blast gun tip will frequently clog.

Jet/Nozzle Combinations

Refer to the table in **Figure 4** for suggested air jet and nozzle combination for an approximate abrasive flow; for replacement part numbers of a highly used blasting tip, refer to the list in **Figure 5**. Refer to magazines, trade articles, professionals, and the abrasive manufacturer for the best combination that is required for your particular abrasive use.

Sandblasting Media

Below is a list of the most common blasting abrasives. Refer to magazines, trade articles, professionals, and the abrasive manufacturer for the specific surfaces that can be addressed with a type of abrasive. All abrasives have benefits and drawbacks like quality of surface finish, abrasive life, toxicity, and what precautions you must take to prevent environmental damage or personal injury to your respiratory system.

Steel Type Abrasives

This aggressive abrasive creates a rough finish that accepts paint well. The abrasive is very durable and has a long life; however, it **MUST** be kept very dry to prevent rusting.

Alumina Type Abrasives

This multi-purpose abrasive creates a smoother finish than the steel abrasives, but has a shorter life span. Less of the workpiece surface is removed with this more forgiving abrasive.

Glass and Garnet Type Abrasives

Typically this abrasive works well for soft metals and addressing surface issues with machine parts where tolerances cannot be affected. The life of this abrasive is limited and not well suited for repetitively recycling.

Jet/Nozzle Flow Combinations:

#1	Air Jet Orifice Diameter:	$5/64"$
	Nozzle Orifice Diameter:	$3/16"$
	Abrasive Flow @ 60 PSI:	0.11 L/Min.
#2	Air Jet Orifice Diameter:	$7/64"$
	Nozzle Orifice Diameter:	$13/64"$
	Abrasive Flow @ 60 PSI:	0.18 L/Min.
#3	Air Jet Orifice Diameter:	$1/8"$
	Nozzle Orifice Diameter:	$15/64"$
	Abrasive Flow @ 60 PSI:	0.25 L/Min.
#4	Air Jet Orifice Diameter:	$5/32"$
	Nozzle Orifice Diameter:	$9/32"$
	Abrasive Flow @ 60 PSI:	0.36 L/Min.

Figure 4. Jet/nozzle flow combinations.

Replacement Nozzles:

PART

XM1055005: Nozzle Set ($3/16"$, $13/64"$, $15/64"$, $9/32"$).

XM1055005-1: #1 Nozzle ($3/16"$ ID).

XM1055005-2: #2 Nozzle ($13/64"$ ID).

XM1055005-3: #3 Nozzle ($15/64"$ ID).

XM1055005-4: #4 Nozzle ($9/32"$ ID).

Figure 5. Replacement nozzles.

Sand Type Abrasives

This abrasive is easy to find, and gives an average finish that is acceptable for most projects. Sand has a good recycling life and is very economical.

Plastic Type Abrasives

Applied at low pressures of 30 to 50 PSI, plastic abrasives should be harder than the coating being removed, but softer than the workpiece to avoid damage. Plastic abrasive is excellent for addressing surface issues on aluminum, magnesium, copper, brass, thin steel, titanium, and composite surfaces and fiberglass.

Other Types of Abrasives Available

Ground walnut or peanut shells.
Ground corn cob.
Sodium bicarbonate.
Wheat starch.

! WARNING



NEVER use gasoline or other petroleum-based solvents to clean with. Most have low flash points, which make them extremely flammable. A risk of explosion and burning exists if these products are used. Serious personal injury may occur if this warning is ignored!

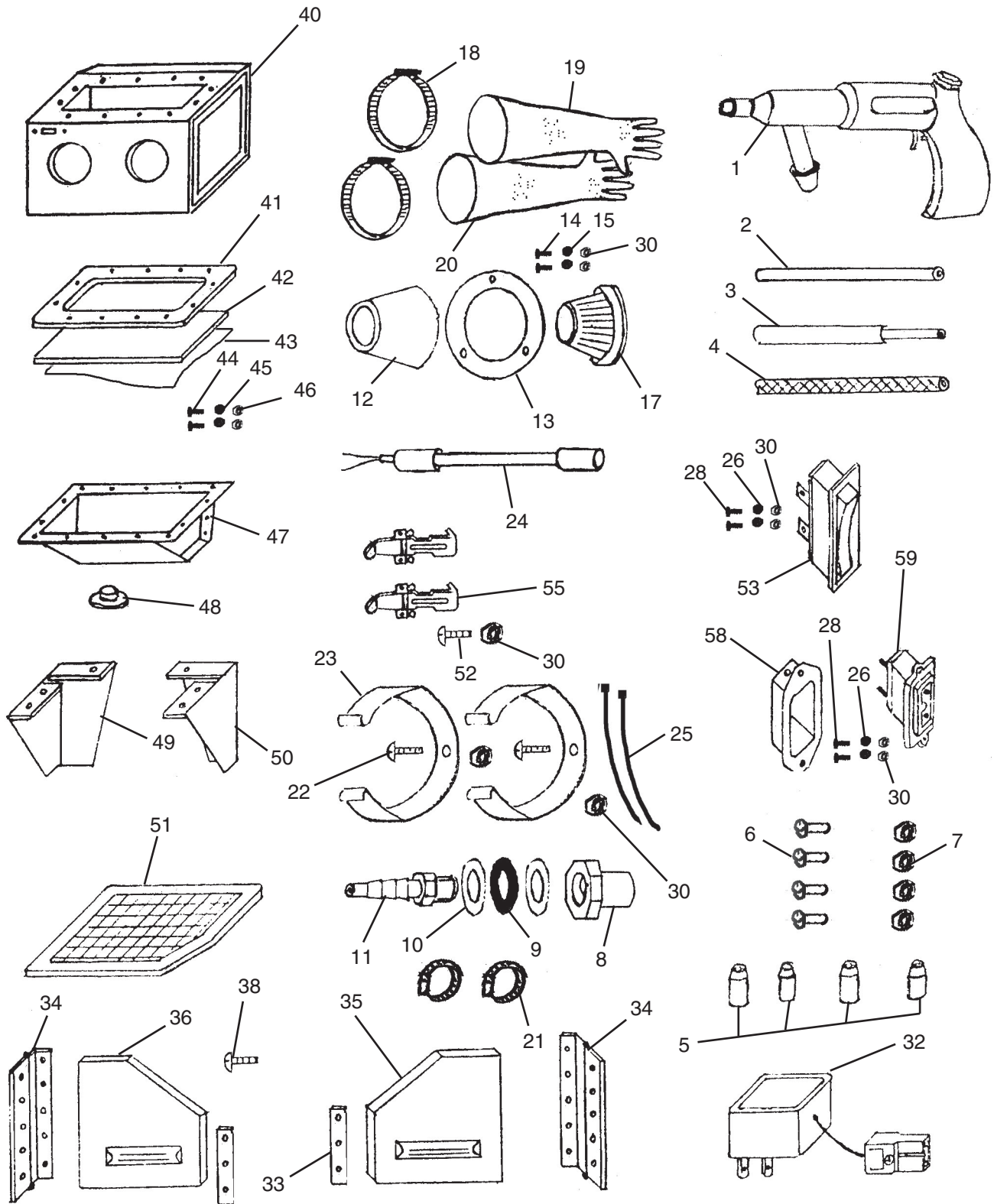
Cabinet Cleaning

When cleaning this sandblasting cabinet, DO NOT use chlorine-based solvents such as brake parts cleaner or acetone—if you happen to splash some onto a painted surface or the plastic window, the paint will lift and the window will cloud. DO NOT use a rag to wipe the dust from the window, or the abrasives will scratch it, use a soft, dry paint brush.

To clean, the sandblasting cabinet, do these steps:

1. Put on safety goggles and your approved NIOSH respirator.
2. Disconnect the power and air supply.
3. Vacuum the exterior of the sandblasting cabinet and the window.
4. Use a soft, dry paint brush to brush the dust from both sides of the plastic window.

PARTS



REF	PART #	DESCRIPTION
1	XM1055001	BLAST GUN
2	XM1055002	SUCTION HOSE
3	XM1055003	SUCTION TUBE
4	XM1055004	PRESSURE SUPPLY HOSE
5	XM1055005	NOZZLE SET
6	XM1055006	JET SET
7	XM1055007	JET SEAL SET
8	XM1055008	BULKHEAD FITTING
9	XM1055009	SEAL
10	XM1055010	FLAT SPACER
11	XM1055011	HOSE NIPPLE
12	XM1055012	FOAM FILTER
13	XM1055013	RING
14	XPS38M	PHLP HD SCR M4-.7 X 10
15	XPW05M	FLAT WASHER 4MM
17	XM1055017	FILTER ELEMENT
18	XM1055018	6" HOSE CLAMP
19	XM1055019	LEFT GLOVE
20	XM1055020	RIGHT GLOVE
21	XM1055021	1" HOSE CLAMP
22	XPS38M	PHLP HD SCR M4-.7 X 10
23	XM1055023	LAMP CLAMP
24	XM1055024	COMPLETE LAMP ASSEMBLY
25	XM1055025	ZIP TIE
26	XPW05M	FLAT WASHER 4MM

REF	PART #	DESCRIPTION
28	XPS38M	PHLP HD SCR M4-.7 X 10
30	XPN04M	HEX NUT M4-.7
32	XM1055032	TRANSFORMER
33	XM1055033	LATCH CATCH
34	XM1055034	HINGE
35	XM1055035	LEFT DOOR
36	XM1055036	RIGHT DOOR
38	XPHTK18	TAP SCREW #10 X 5/8
40	XM1055040	CABINET
41	XM1055041	WINDOW FRAME AND SEAL
42	XM1055042	WINDOW PLEXIGLASS
43	XM1055043	PLASTIC FILM
44	XPS14M	PHLP HD SCR M6-1 X 12
45	XPW03M	6MM FLAT WASHER
46	XPN01M	HEX NUT M6-1
47	XM1055047	HOPPER
48	XM1055048	HOPPER PLUG
49	XM1055049	SHORT LEFT LEG
50	XM1055050	SHORT RIGHT LEG
51	XM1055051	SCREEN
52	XPS38M	PHLP HD SCR M4-.7 X 10
53	XM1055053	SWITCH
55	XM1055055	LATCH
58	XM1055058	RECEPTACLE COVER
59	XM1055059	RECEPTACLE

Label Placement

WARNING

Safety labels warn about machine hazards and how to prevent machine damage or injury. The owner of this machine **MUST** maintain the original location and readability of all labels on this machine. If any label is removed or becomes unreadable, **REPLACE** that label before allowing the machine to enter service again. Contact Woodstock International, Inc. at (360) 734-3482 or www.shopfoxtools.com to order new labels.



REF	PART #	DESCRIPTION
61	XM1055061	PRESSURE WARNING 100PSI LABEL
62	XM1055062	GENERAL WARNING LABEL
63	XM1055063	DATA LABEL
64	XM1055064	DUST MASK LABEL

Notes

Warranty

Woodstock International, Inc. warrants all **SHOP FOX®** machinery to be free of defects from workmanship and materials for a period of two years from the date of original purchase by the original owner. This warranty does not apply to defects due directly or indirectly to misuse, abuse, negligence or accidents, lack of maintenance, or reimbursement of third party expenses incurred.

Woodstock International, Inc. will repair or replace, at its expense and at its option, the **SHOP FOX®** machine or machine part which in normal use has proven to be defective, provided that the original owner returns the product prepaid to the **SHOP FOX®** factory service center or authorized repair facility designated by our Bellingham, WA office, with proof of their purchase of the product within two years, and provides Woodstock International, Inc. reasonable opportunity to verify the alleged defect through inspection. If it is determined there is no defect, or that the defect resulted from causes not within the scope of Woodstock International Inc.'s warranty, then the original owner must bear the cost of storing and returning the product.

This is Woodstock International, Inc.'s sole written warranty and any and all warranties that may be implied by law, including any merchantability or fitness, for any particular purpose, are hereby limited to the duration of this written warranty. We do not warrant that **SHOP FOX®** machinery complies with the provisions of any law or acts. In no event shall Woodstock International, Inc.'s liability under this warranty exceed the purchase price paid for the product, and any legal actions brought against Woodstock International, Inc. shall be tried in the State of Washington, County of Whatcom. We shall in no event be liable for death, injuries to persons or property or for incidental, contingent, special or consequential damages arising from the use of our products.

Every effort has been made to ensure that all **SHOP FOX®** machinery meets high quality and durability standards. We reserve the right to change specifications at any time because of our commitment to continuously improve the quality of our products.



Warranty Registration

Name _____
Street _____
City _____ State _____ Zip _____
Phone # _____ Email _____ Invoice # _____
Model # _____ Serial # _____ Dealer Name _____ Purchase Date _____

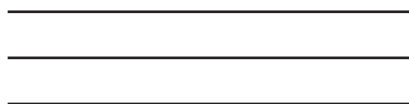
The following information is given on a voluntary basis. It will be used for marketing purposes to help us develop better products and services. Of course, all information is strictly confidential.

1. How did you learn about us?
☐ Advertisement ☐ Friend ☐ Local Store
☐ Mail Order Catalog ☐ Website ☐ Other:
2. How long have you been a woodworker/metalworker?
☐ 0-2 Years ☐ 2-8 Years ☐ 8-20 Years ☐ 20+ Years
3. How many of your machines or tools are Shop Fox®?
☐ 0-2 ☐ 3-5 ☐ 6-9 ☐ 10+
4. Do you think your machine represents a good value? ☐ Yes ☐ No
5. Would you recommend Shop Fox® products to a friend? ☐ Yes ☐ No
6. What is your age group?
☐ 20-29 ☐ 30-39 ☐ 40-49
☐ 50-59 ☐ 60-69 ☐ 70+
7. What is your annual household income?
☐ \$20,000-\$29,000 ☐ \$30,000-\$39,000 ☐ \$40,000-\$49,000
☐ \$50,000-\$59,000 ☐ \$60,000-\$69,000 ☐ \$70,000+
8. Which of the following magazines do you subscribe to?

<input type="checkbox"/> Cabinet Maker	<input type="checkbox"/> Popular Mechanics	<input type="checkbox"/> Today's Homeowner
<input type="checkbox"/> Family Handyman	<input type="checkbox"/> Popular Science	<input type="checkbox"/> Wood
<input type="checkbox"/> Hand Loader	<input type="checkbox"/> Popular Woodworking	<input type="checkbox"/> Wooden Boat
<input type="checkbox"/> Handy	<input type="checkbox"/> Practical Homeowner	<input type="checkbox"/> Woodshop News
<input type="checkbox"/> Home Shop Machinist	<input type="checkbox"/> Precision Shooter	<input type="checkbox"/> Woodsmith
<input type="checkbox"/> Journal of Light Cont.	<input type="checkbox"/> Projects in Metal	<input type="checkbox"/> Woodwork
<input type="checkbox"/> Live Steam	<input type="checkbox"/> RC Modeler	<input type="checkbox"/> Woodworker West
<input type="checkbox"/> Model Airplane News	<input type="checkbox"/> Rifle	<input type="checkbox"/> Woodworker's Journal
<input type="checkbox"/> Modeltec	<input type="checkbox"/> Shop Notes	<input type="checkbox"/> Other:
<input type="checkbox"/> Old House Journal	<input type="checkbox"/> Shotgun News	

9. Comments: _____

FOLD ALONG DOTTED LINE



Place
Stamp
Here



WOODSTOCK INTERNATIONAL INC.
P.O. BOX 2309
BELLINGHAM, WA 98227-2309



FOLD ALONG DOTTED LINE

TAPE ALONG EDGES--PLEASE DO NOT STAPLE

